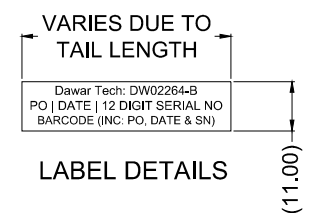
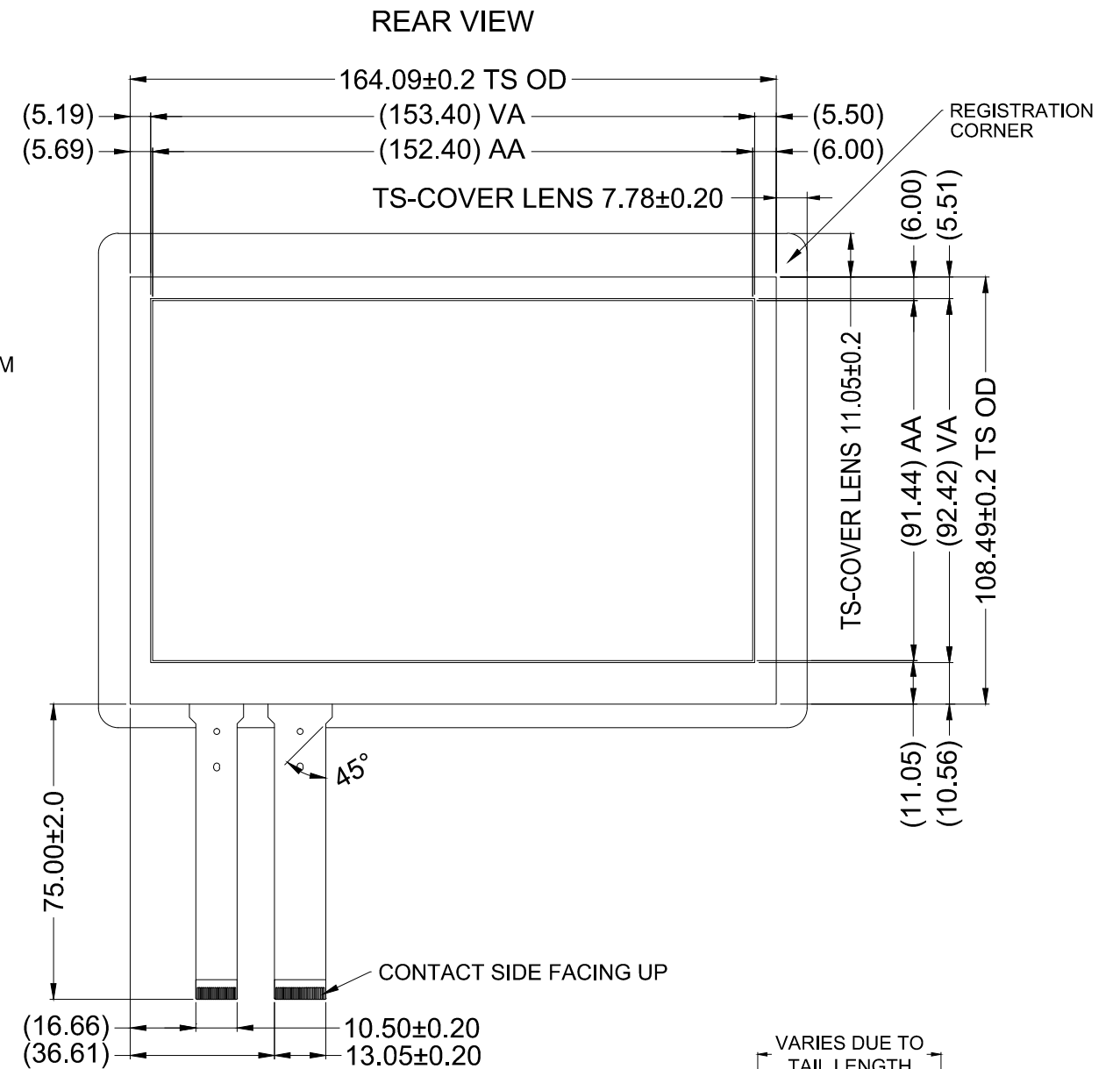
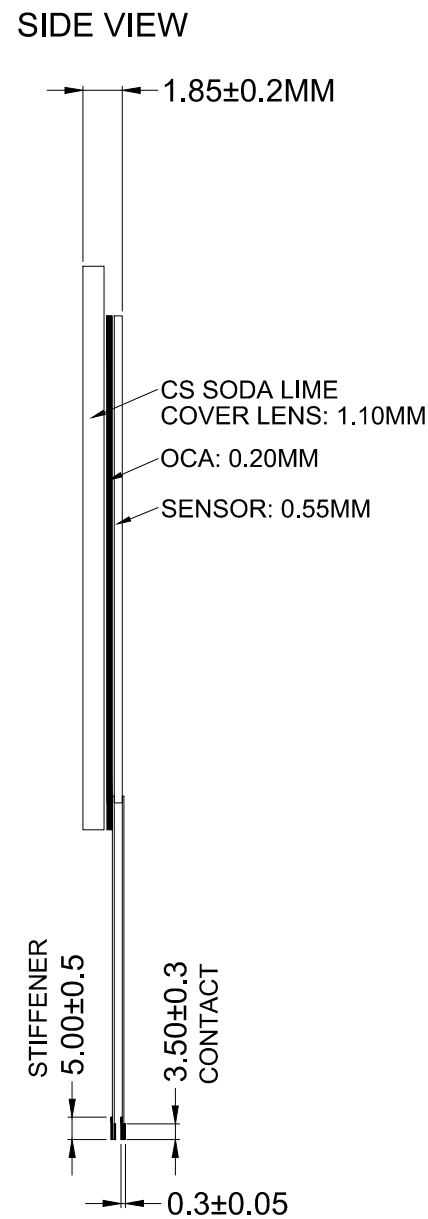
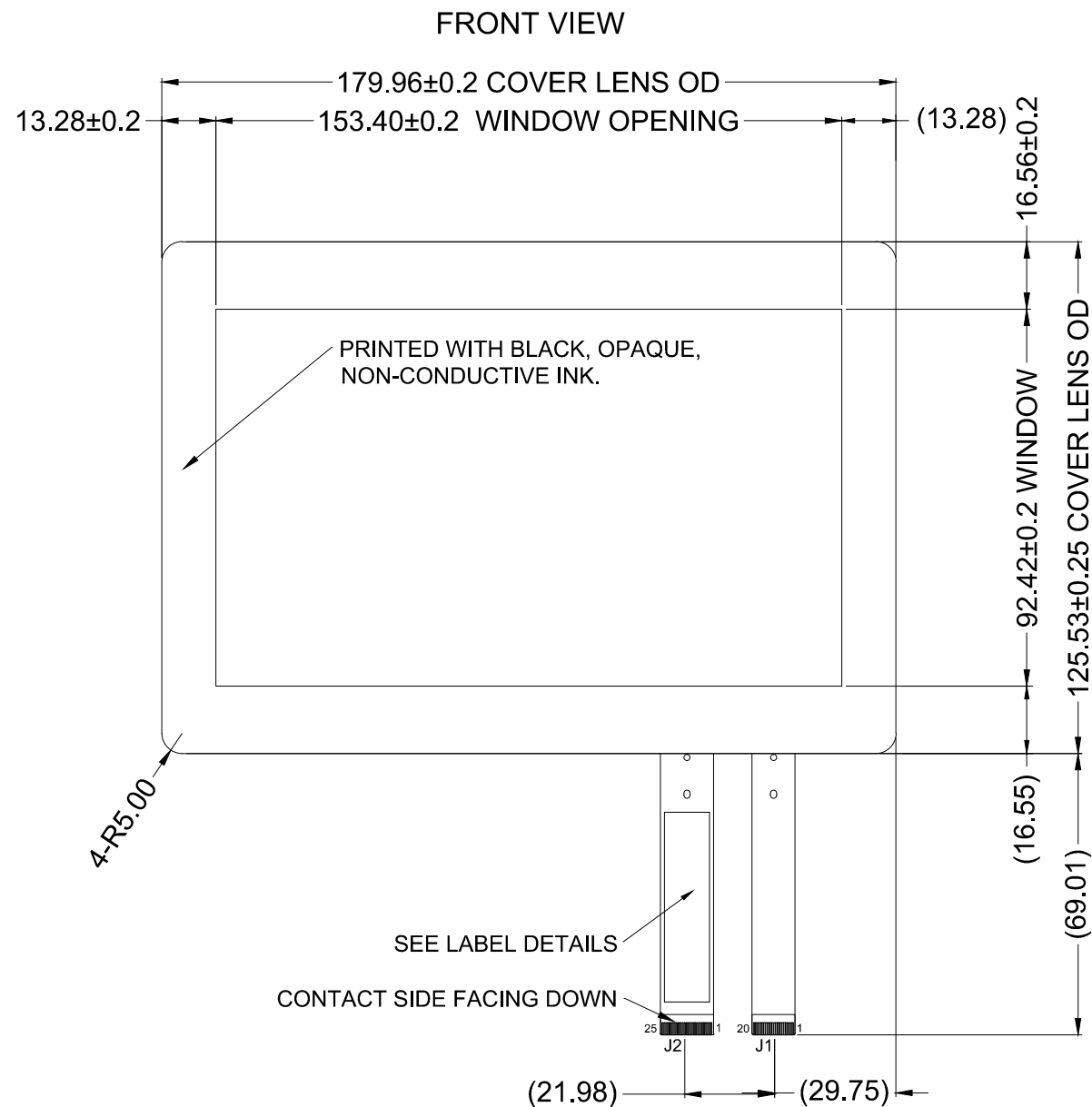


REVISIONS				DWN	DATE
ITEM REV	DWG REV	ECO	DESCRIPTION		
B	1	1193	VA REDUCED FOR IMPROVED LCD COVERAGE.	CPO	02-16-17
B	2	-	PREPARED FOR WEBSITE RELEASE.	CPO	01-22-19



- NOTES:**
1. TAIL TYPE: GOLD PLATED FPC
  2. ALL MATERIALS ARE ROHS COMPLIANT.
  3. SENSOR SPECIFICATIONS PER QAD 19-1 (CURRENT REVISION).
  4. DIMENSIONS IN PARENTHESIS ARE FOR REFERENCE ONLY.
  5. FOR USE WITH 25 x 20 MICROCHIP (ATMEL) CONTROLLER.
  6. TOUCH SENSOR:  
0.55MM GLASS WITH DOUBLE-SIDED INDEX MATCHED ITO.
  7. COVER LENS:  
- 1.10MM CHEMICALLY STRENGTHENED SODA LIME GLASS  
- DOUBLE ROUND PENCIL GROUND EDGE  
- PANTONE BLACK



THIS CONFIDENTIAL DOCUMENT IS THE PROPERTY OF DAWAR TECHNOLOGIES, INC. AND SHALL NOT BE COPIED, REPRODUCED, DISCLOSED, AND/OR USED AS THE BASIS FOR MANUFACTURING OR SALE WITHOUT PERMISSION OF A DULY AUTHORIZED REPRESENTATIVE OF DAWAR TECHNOLOGIES, INC.

DESCRIPTION  
 7.0" GG2 PROJECTED CAPACITIVE TOUCH SENSOR

ITEM/DRAWING NO. DW02264-B			DWG REV 2	
UNIT MM [INCH]	TOLERANCE ±0.25 [0.010] UNLESS SPECIFIED	SHEET 1 OF 1	DRAWN BY Bill Dorfner	DATE 06-20-16